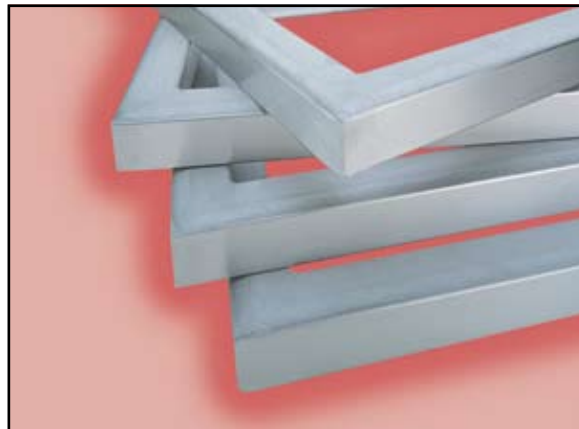
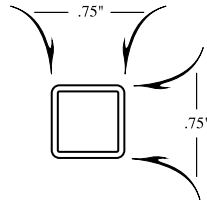


Stretch & Glue Frame Price List

March 2024



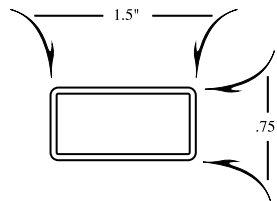
GT 75 / DIA-MINI .75



Max Size: 18"
 Width: 3/4"
 Height: 3/4"
 Wall Thickness: .063
 Weight per Ft: .2 Lbs

| Total Frame O.D. Inches | | | | | | | | | |
|-------------------------|-----------|-----------|------------------|-----------|-----------|---------------------|-----------------------------|-----------|-----------|
| 20 | 22 | 24 | 26 | 28 | 30 | 32 | 34 | 36 | 38 |
| \$ 28.75 | 28.95 | 29.15 | 29.35 | 29.55 | 29.75 | 29.95 | 30.15 | 30.30 | 30.50 |
| 40 | 42 | 44 | 46 | 48 | 50 | 52 | 54 | 56 | 58 |
| 30.70 | 30.90 | 31.10 | 31.30 | 31.50 | 31.70 | 32.00 | 32.45 | 32.85 | 33.20 |
| 60 | 62 | 64 | 66 | 68 | 70 | 72 | Frames Over 72" O.D. | | |
| 33.60 | 33.95 | 34.35 | 34.75 | 35.10 | 35.50 | 35.85 | \$.49 per O.D. Inch | | |
| 1 to 12 List Price | | | 13 to 24 Less 5% | | | 25 or more Less 10% | | | |

GT 150 LOW / DIA-MINI 1.5



Max Size: 24"
 Width: 1 1/2"
 Height: 3/4"
 Wall Thickness: .063
 Weight per Ft: .31 Lbs

| Total Frame O.D. Inches | | | | | | | | | |
|-------------------------|-----------|-----------|------------------|-----------|-----------|---------------------|-----------------------------|-----------|-----------|
| 24 | 26 | 28 | 30 | 32 | 34 | 36 | 38 | 40 | 42 |
| \$ 35.85 | 36.15 | 36.45 | 36.75 | 37.00 | 37.35 | 37.65 | 37.95 | 38.25 | 38.60 |
| 44 | 46 | 48 | 50 | 52 | 54 | 56 | 58 | 60 | 62 |
| 38.90 | 39.20 | 39.50 | 39.80 | 40.30 | 40.75 | 41.25 | 41.75 | 42.25 | 42.75 |
| 64 | 66 | 68 | 70 | 72 | 74 | 76 | 78 | 80 | 82 |
| 43.20 | 43.70 | 44.20 | 44.70 | 45.20 | 45.65 | 46.15 | 46.65 | 47.15 | 47.65 |
| 84 | 86 | 88 | 90 | 92 | 94 | 96 | Frames Over 96" O.D. | | |
| 48.10 | 48.60 | 49.10 | 49.60 | 50.00 | 50.55 | 51.00 | \$.53 per O.D. Inch | | |
| 1 to 12 List Price | | | 13 to 24 Less 5% | | | 25 or more Less 10% | | | |

Eino / Diamond Chase
 (800) 923-FRAME
 (626) 969-1821 ph
 (626) 969-1599 fax

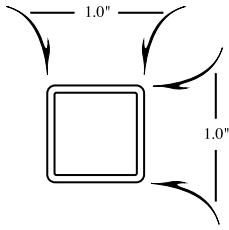
418 South Motor Ave.
 Azusa, CA 91702

Stretch & Glue Price List

March 2024



GT 100 / TU-100



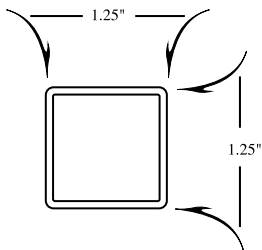
Max Size: 24"
 Width: 1"
 Height: 1"
 Wall Thickness: .063
 Weight per Ft: .28 Lbs

Total Frame O.D. Inches

| | | | | | | | | | |
|-----------|-----------|-----------|-----------|-----------|-----------|-----------|-----------------------------|-----------|-----------|
| 24 | 26 | 28 | 30 | 32 | 34 | 36 | 38 | 40 | 42 |
| \$ 32.40 | 32.70 | 33.00 | 33.30 | 33.60 | 33.90 | 34.20 | 34.50 | 34.80 | 35.15 |
| 44 | 46 | 48 | 50 | 52 | 54 | 56 | 58 | 60 | 62 |
| 35.45 | 35.75 | 36.00 | 36.35 | 36.85 | 37.30 | 37.80 | 38.30 | 38.80 | 39.30 |
| 64 | 66 | 68 | 70 | 72 | 74 | 76 | 78 | 80 | 82 |
| 39.75 | 40.25 | 40.75 | 41.25 | 41.70 | 42.20 | 42.70 | 43.20 | 43.70 | 44.15 |
| 84 | 86 | 88 | 90 | 92 | 94 | 96 | Frames Over 96" O.D. | | |
| 44.65 | 45.15 | 45.65 | 46.15 | 46.60 | 47.10 | 47.60 | \$.50 per O.D. Inch | | |

1 to 12 List Price 13 to 24 Less 5% 25 or more Less 10%

GT 125 / TU-125



Max Size: 24"
 Width: 1 1/4"
 Height: 1 1/4"
 Wall Thickness: .050
 Weight per Ft: .29 Lbs

Total Frame O.D. Inches

| | | | | | | | | | |
|-----------|-----------|-----------|-----------|-----------|-----------|-----------|-----------------------------|-----------|-----------|
| 24 | 26 | 28 | 30 | 32 | 34 | 36 | 38 | 40 | 42 |
| \$ 35.55 | 35.85 | 36.10 | 36.40 | 36.65 | 36.95 | 37.25 | 37.50 | 37.80 | 38.00 |
| 44 | 46 | 48 | 50 | 52 | 54 | 56 | 58 | 60 | 62 |
| 38.35 | 38.65 | 38.90 | 39.20 | 39.65 | 40.10 | 40.60 | 41.00 | 41.50 | 42.00 |
| 64 | 66 | 68 | 70 | 72 | 74 | 76 | 78 | 80 | 82 |
| 42.45 | 42.90 | 43.35 | 43.85 | 44.30 | 44.75 | 45.25 | 45.70 | 46.15 | 46.65 |
| 84 | 86 | 88 | 90 | 92 | 94 | 96 | Frames Over 96" O.D. | | |
| 47.10 | 47.55 | 48.00 | 48.50 | 48.95 | 49.40 | 49.90 | \$.52 per O.D. Inch | | |

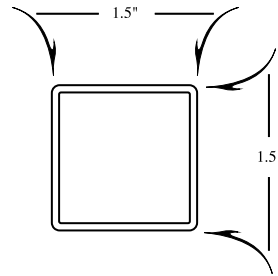
1 to 12 List Price 13 to 24 Less 5% 25 or more Less 10%

Eino / Diamond Chase
 (800) 923-FRAME
 (626) 969-1821 ph
 (626) 969-1599 fax

418 South Motor Ave.
 Azusa, CA 91702

Prices Subject to Change Without Notice

GT150 LITE / TU-150 LITE



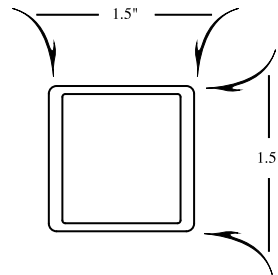
Max Size: 36"
 Width: 1 1/2"
 Height: 1 1/2"
 Wall Thickness: .080
 Weight per Ft: .54 Lbs

Total Frame O.D. Inches

| | | | | | | | | | |
|------------|------------|------------|------------|------------|------------|------------|------------------------------|------------|------------|
| 72 | 74 | 76 | 78 | 80 | 82 | 84 | 86 | 88 | 90 |
| \$ 61.25 | 61.80 | 62.30 | 62.85 | 63.40 | 63.95 | 64.50 | 65.00 | 65.60 | 66.10 |
| 92 | 94 | 96 | 98 | 100 | 102 | 104 | 106 | 108 | 110 |
| 66.65 | 67.20 | 67.75 | 68.30 | 68.85 | 69.55 | 70.30 | 71.00 | 71.75 | 72.50 |
| 112 | 114 | 116 | 118 | 120 | 122 | 124 | 126 | 128 | 130 |
| 73.20 | 73.95 | 74.65 | 75.40 | 76.15 | 76.85 | 77.60 | 78.30 | 79.00 | 79.75 |
| 132 | 134 | 136 | 138 | 140 | 142 | 144 | Frames Over 144" O.D. | | |
| 80.50 | 81.25 | 81.95 | 82.70 | 83.40 | 84.15 | 84.85 | \$.59 per O.D. Inch | | |

1 to 12 List Price 13 to 24 Less 5% 25 or more Less 10%

GT150 / TU-150



Max Size: 50"
 Width: 1 1/2"
 Height: 1 1/2"
 Wall Thickness: .140 / .080
 Weight per Ft: .745 Lbs

Total Frame O.D. Inches

| | | | | | | | | | |
|------------|------------|------------|------------|------------|------------|------------|------------------------------|------------|------------|
| 128 | 130 | 132 | 134 | 136 | 138 | 140 | 142 | 144 | 146 |
| \$ 90.30 | 91.20 | 92.10 | 93.00 | 93.90 | 94.85 | 95.75 | 96.65 | 97.55 | 98.45 |
| 148 | 150 | 152 | 154 | 156 | 158 | 160 | 162 | 164 | 166 |
| 99.35 | 100.00 | 101.15 | 102.00 | 102.95 | 103.85 | 104.75 | 105.70 | 106.60 | 107.50 |
| 168 | 170 | 172 | 174 | 176 | 178 | 180 | 182 | 184 | 186 |
| 108.40 | 109.30 | 110.00 | 111.10 | 112.00 | 112.90 | 113.80 | 114.75 | 115.65 | 116.55 |
| 188 | 190 | 192 | 194 | 196 | 198 | 200 | Frames Over 200" O.D. | | |
| 117.55 | 118.35 | 119.25 | 120.00 | 121.00 | 121.95 | 122.85 | \$.61 per O.D. Inch | | |

1 to 12 List Price 13 to 24 Less 5% 25 or more Less 10%

Eino / Diamond Chase
 (800) 923-FRAME
 (626) 969-1821 ph
 (626) 969-1599 fax

418 South Motor Ave.
 Azusa, CA 91702

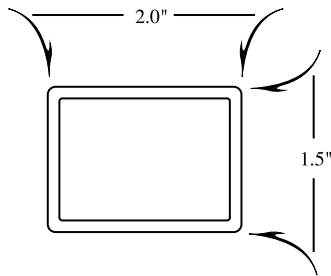
Stretch & Glue

Price List

March 2024



GT200 / TU-200



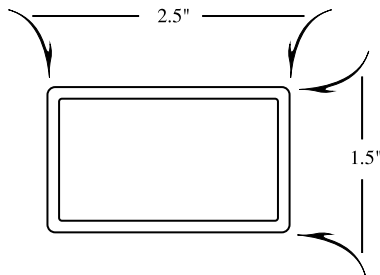
Max Size: 60"
 Width: 2"
 Height: 1 1/2"
 Wall Thickness: .125
 Weight per Ft: .972 Lbs

Total Frame O.D. Inches

| | | | | | | | | | |
|------------|------------|------------|------------|------------|------------|------------|------------------------------|------------|------------|
| 168 | 170 | 172 | 174 | 176 | 178 | 180 | 182 | 184 | 186 |
| \$ 129.90 | 131.00 | 132.15 | 133.30 | 134.45 | 135.55 | 136.70 | 137.85 | 138.95 | 140.00 |
| 188 | 190 | 192 | 194 | 196 | 198 | 200 | 202 | 204 | 206 |
| 141.25 | 142.35 | 143.50 | 144.65 | 145.75 | 146.90 | 148.00 | 149.15 | 150.00 | 151.45 |
| 208 | 210 | 212 | 214 | 216 | 218 | 220 | 222 | 224 | 226 |
| 152.55 | 153.70 | 154.85 | 155.95 | 157.10 | 158.25 | 159.35 | 160.50 | 161.65 | 162.75 |
| 228 | 230 | 232 | 234 | 236 | 238 | 240 | Frames Over 240" O.D. | | |
| 163.90 | 165.00 | 166.15 | 167.30 | 168.45 | 169.55 | 170.70 | \$.71 per O.D. Inch | | |

1 to 12 List Price 13 to 24 Less 5% 25 or more Less 10%

GT250 / TU-250



Max Size: 72"
 Width: 2 1/2"
 Height: 1 1/2"
 Wall Thickness: .125
 Weight per Ft: 1.2 Lbs

Total Frame O.D. Inches

| | | | | | | | | | |
|------------|------------|------------|------------|------------|------------|------------|------------------------------|------------|------------|
| 144 | 148 | 152 | 156 | 160 | 164 | 168 | 172 | 176 | 180 |
| \$ 152.20 | 154.50 | 156.75 | 159.10 | 161.40 | 163.70 | 165.95 | 168.25 | 170.55 | 172.85 |
| 184 | 188 | 192 | 196 | 200 | 204 | 208 | 212 | 216 | 220 |
| 175.00 | 177.50 | 179.75 | 182.00 | 184.35 | 187.00 | 189.70 | 192.35 | 195.00 | 197.70 |
| 224 | 228 | 232 | 236 | 240 | 244 | 248 | 252 | 256 | 260 |
| 200.00 | 203.00 | 205.00 | 208.40 | 211.00 | 213.75 | 216.40 | 219.00 | 221.70 | 224.40 |
| 264 | 268 | 272 | 276 | 280 | 284 | 288 | Frames Over 288" O.D. | | |
| 227.00 | 229.75 | 232.40 | 235.00 | 237.75 | 240.40 | 243.00 | \$.84 per O.D. Inch | | |

1 to 12 List Price 13 to 24 Less 5% 25 or more Less 10%



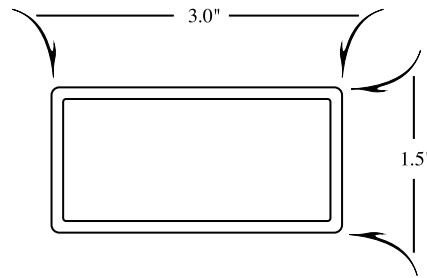
Threaded Inserts & Registration Bushings

Eino / Diamond Chase
 (800) 923-FRAME
 (626) 969-1821 ph
 (626) 969-1599 fax

418 South Motor Ave.
 Azusa, CA 91702

Prices Subject to Change Without Notice

GT300 / TU-300



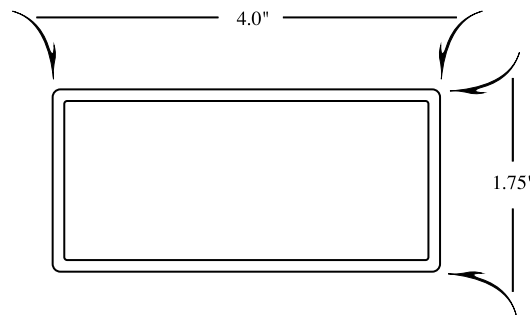
Max Size: 105"
 Width: 3"
 Height: 1 1/2"
 Wall Thickness: .125
 Weight per Ft: 1.27 Lbs

Total Frame O.D. Inches

| | | | | | | | | | |
|------------|------------|------------|------------|------------|------------|------------|---------------------------------|------------|------------|
| 160 | 166 | 172 | 178 | 184 | 190 | 196 | 202 | 208 | 214 |
| \$ 204.85 | 208.75 | 212.65 | 216.50 | 220.40 | 224.25 | 228.15 | 232.00 | 235.95 | 240.50 |
| 220 | 226 | 232 | 238 | 244 | 250 | 256 | 262 | 268 | 274 |
| 245.00 | 249.70 | 254.30 | 258.90 | 263.50 | 268.10 | 272.65 | 277.25 | 281.85 | 286.45 |
| 280 | 286 | 292 | 298 | 304 | 310 | 316 | 322 | 328 | 334 |
| 291.00 | 295.65 | 300.00 | 304.85 | 309.45 | 314.00 | 318.65 | 323.25 | 327.85 | 332.45 |
| 340 | 346 | 352 | 358 | 364 | 370 | 376 | Frames over 376" | | |
| 337.00 | 341.65 | 346.25 | 350.80 | 355.40 | 360.00 | 364.60 | O.D. \$.97 per O.D. inch | | |

1 to 12 List Price 13 to 24 Less 5% 25 or more Less 10%

GT400 / TU-400



Max Size: 144"
 Width: 4"
 Height: 1 3/4"
 Wall Thickness: .125
 Weight per Ft: 1.6 Lbs

Total Frame O.D. Inches

| | | | | | | | | | |
|------------|------------|------------|------------|------------|------------|------------|------------------------------|------------|------------|
| 250 | 258 | 266 | 274 | 282 | 290 | 298 | 306 | 314 | 322 |
| \$ 484.75 | 495.95 | 507.10 | 518.30 | 529.45 | 540.60 | 551.75 | 562.95 | 574.10 | 585.30 |
| 330 | 338 | 346 | 354 | 362 | 370 | 378 | 386 | 394 | 402 |
| 596.45 | 607.60 | 618.80 | 629.95 | 641.10 | 652.30 | 663.45 | 674.60 | 685.80 | 696.95 |
| 410 | 418 | 426 | 434 | 442 | 450 | 458 | 466 | 474 | 482 |
| 708.10 | 719.30 | 730.00 | 741.60 | 752.80 | 763.95 | 775.00 | 786.30 | 797.50 | 808.65 |
| 490 | 498 | 506 | 514 | 522 | 530 | 538 | Frames Over 538" O.D. | | |
| 819.80 | 831.00 | 842.10 | 853.30 | 864.50 | 875.00 | 886.80 | \$ 1.65 per O.D. Inch | | |

1 to 5 List Price 6 to 11 Less 5% 12 or more Less 10%



Corner Gussets

Eino / Diamond Chase
 (800) 923-FRAME
 (626) 969-1821 ph
 (626) 969-1599 fax

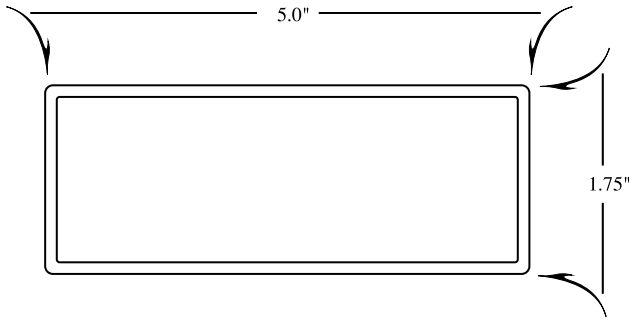
418 South Motor Ave.
 Azusa, CA 91702

Stretch & Glue Price List

March 2024



GT500 / TU-500

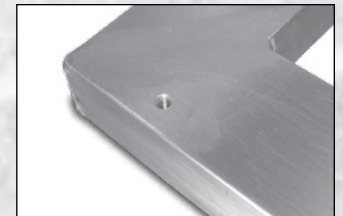


Max Size: 206"
 Width: 5"
 Height: 1 3/4"
 Wall Thickness: .125
 Weight per Ft: 1.9 Lbs

Total Frame O.D. Inches

| | | | | | | | | | |
|------------|------------|------------|------------|------------|------------|------------|------------------------------|------------|------------|
| 350 | 360 | 370 | 380 | 390 | 400 | 410 | 420 | 430 | 440 |
| \$ 741.25 | 756.50 | 771.85 | 787.15 | 802.45 | 817.75 | 833.00 | 848.35 | 863.65 | 878.95 |
| 450 | 460 | 470 | 480 | 490 | 500 | 510 | 520 | 530 | 540 |
| 894.25 | 909.50 | 924.90 | 940.00 | 955.50 | 970.00 | 986.00 | 1001.00 | 1017.00 | 1032.00 |
| 550 | 560 | 570 | 580 | 590 | 600 | 610 | 620 | 630 | 640 |
| 1047.00 | 1062.00 | 1078.00 | 1093.00 | 1109.00 | 1124.00 | 1139.00 | 1154.00 | 1170.00 | 1185.00 |
| 650 | 660 | 670 | 680 | 690 | 700 | 710 | Frames Over 710" O.D. | | |
| 1200.00 | 1216.00 | 1230.00 | 1246.00 | 1262.00 | 1277.00 | 1292.00 | \$1.82 per O.D. inch | | |

1 to 5 List Price 6 to 11 Less 5% 12 or more Less 10%



Threaded Inserts & Registration Bushings

Eino / Diamond Chase
 (800) 923-FRAME
 (626) 969-1821 ph
 (626) 969-1599 fax

418 South Motor Ave.
 Azusa, CA 91702

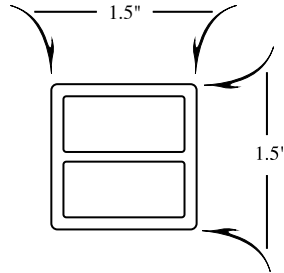
Prices Subject to Change Without Notice

DOUBLE HOLLOW STRETCH & GLUE

PRICE LIST

March 2024

DT-150



Max Size: 50"

Width: 1 1/2"

Height: 1 1/2"

Wall Thickness: .125

Weight per Ft: 1.0 Lbs

Total Frame O.D. Inches

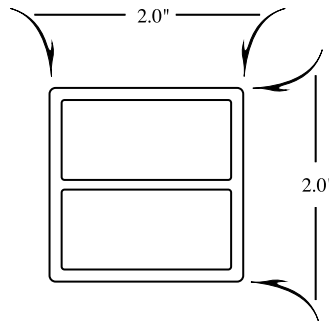
| | | | | | | | | | |
|------------|------------|------------|------------|------------|------------|------------|------------------------------|------------|------------|
| 60 | 64 | 68 | 72 | 76 | 80 | 84 | 88 | 92 | 96 |
| \$ 79.55 | 81.75 | 83.90 | 86.10 | 88.25 | 90.45 | 92.60 | 94.80 | 97.00 | 99.00 |
| 100 | 104 | 108 | 112 | 116 | 120 | 124 | 128 | 132 | 136 |
| 101.35 | 103.90 | 106.50 | 109.00 | 111.60 | 114.20 | 116.75 | 119.35 | 121.90 | 124.50 |
| 140 | 144 | 148 | 152 | 156 | 160 | 164 | 168 | 172 | 176 |
| 127.00 | 129.60 | 132.20 | 134.75 | 137.35 | 139.90 | 142.50 | 145.00 | 147.60 | 150.00 |
| 180 | 184 | 188 | 192 | 196 | 200 | 204 | Frames Over 204" O.D. | | |
| 152.75 | 155.35 | 157.90 | 160.00 | 163.00 | 165.60 | 168.20 | \$.82 per O.D. Inch | | |

1 to 12 List Price

13 to 24 Less 5%

25 or more Less 10%

DT-200



Max Size: 60"

Width: 2"

Height: 2"

Wall Thickness: .125

Weight per Ft: 1.35 Lbs

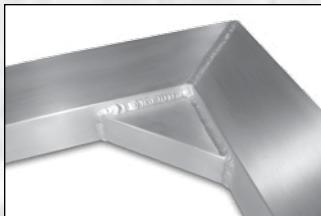
Total Frame O.D. Inches

| | | | | | | | | | |
|------------|------------|------------|------------|------------|------------|------------|------------------------------|------------|------------|
| 96 | 100 | 104 | 108 | 112 | 116 | 120 | 124 | 128 | 132 |
| \$ 139.75 | 142.95 | 146.15 | 149.30 | 153.15 | 156.95 | 160.80 | 164.60 | 168.40 | 172.25 |
| 136 | 140 | 144 | 148 | 152 | 156 | 160 | 164 | 168 | 172 |
| 176.00 | 179.90 | 183.70 | 187.50 | 191.35 | 195.15 | 199.00 | 202.80 | 206.65 | 210.45 |
| 176 | 180 | 184 | 188 | 192 | 196 | 200 | 204 | 208 | 212 |
| 214.30 | 218.10 | 221.90 | 225.75 | 229.60 | 233.40 | 237.20 | 241.00 | 244.85 | 248.65 |
| 216 | 220 | 224 | 228 | 232 | 236 | 240 | Frames Over 240" O.D. | | |
| 252.50 | 256.30 | 260.00 | 263.95 | 267.80 | 271.60 | 275.40 | \$ 1.15 per O.D. Inch | | |

1 to 6 List Price

7 to 12 Less 5%

13 or more Less 10%



Corner Gussets

Eino / Diamond Chase
(800) 923-FRAME
(626) 969-1821 ph
(626) 969-1599 fax

418 South Motor Ave.
Azusa, CA 91702

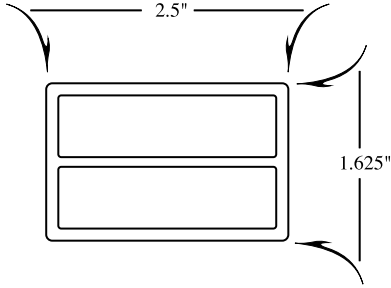
Prices Subject to Change Without Notice

Double Hollow Stretch & Glue

Price List
March 2024



DH-250 LP

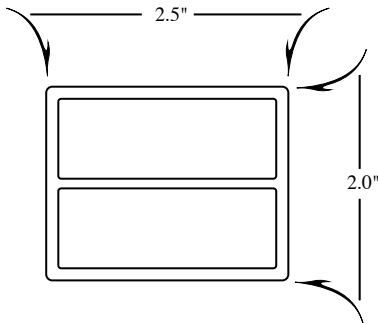


Max Size: 84"
 Width: 2 1/2"
 Height: 1 5/8"
 Wall Thickness: .125
 Weight per Ft: 1.56 Lbs

Total Frame O.D. Inches

| | | | | | | | | | |
|-------------------|------------|------------|-----------------|------------|------------|---------------------|------------------------------|------------|------------|
| 160 | 164 | 168 | 172 | 176 | 180 | 184 | 188 | 192 | 196 |
| \$ 208.00 | 212.00 | 216.10 | 220.00 | 224.20 | 228.25 | 232.30 | 236.35 | 240.00 | 244.45 |
| 200 | 204 | 208 | 212 | 216 | 220 | 224 | 228 | 232 | 236 |
| 248.50 | 252.50 | 256.55 | 260.00 | 264.65 | 268.70 | 272.75 | 276.80 | 280.85 | 285.00 |
| 240 | 244 | 248 | 252 | 256 | 260 | 264 | 268 | 272 | 276 |
| 288.95 | 293.00 | 297.00 | 301.10 | 305.00 | 309.15 | 313.20 | 317.25 | 321.30 | 325.35 |
| 280 | 284 | 288 | 292 | 296 | 300 | 304 | Frames Over 304" O.D. | | |
| 329.40 | 333.45 | 337.50 | 341.55 | 345.60 | 349.65 | 353.70 | \$1.16 per O.D. Inch | | |
| 1 to 6 List Price | | | 7 to 12 Less 5% | | | 13 or more Less 10% | | | |

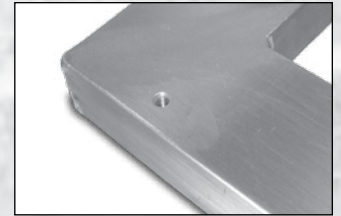
DH-250



Max Size: 105"
 Width: 2 1/2"
 Height: 2"
 Wall Thickness: .125
 Weight per Ft: 1.6 Lbs

Total Frame O.D. Inches

| | | | | | | | | | |
|-------------------|------------|------------|-----------------|------------|------------|---------------------|------------------------------|------------|------------|
| 160 | 164 | 168 | 172 | 176 | 180 | 184 | 188 | 192 | 196 |
| \$229.90 | 234.20 | 238.55 | 242.90 | 247.25 | 251.55 | 255.90 | 260.00 | 264.60 | 268.90 |
| 200 | 204 | 208 | 212 | 216 | 220 | 224 | 228 | 232 | 236 |
| 273.25 | 277.60 | 281.95 | 286.25 | 290.00 | 294.95 | 299.30 | 303.60 | 307.95 | 312.30 |
| 240 | 244 | 248 | 252 | 256 | 260 | 264 | 268 | 272 | 276 |
| 316.65 | 320.95 | 325.30 | 329.65 | 334.00 | 338.30 | 342.65 | 347.00 | 351.35 | 355.65 |
| 280 | 284 | 288 | 292 | 296 | 300 | 304 | Frames Over 304" O.D. | | |
| 360.00 | 364.35 | 368.70 | 373.00 | 377.35 | 381.70 | 386.00 | \$ 1.27 per O.D. Inch | | |
| 1 to 6 List Price | | | 7 to 12 Less 5% | | | 13 or more Less 10% | | | |



Threaded Inserts & Registration Bushings

Eino / Diamond Chase
 (800) 923-FRAME
 (626) 969-1821 ph
 (626) 969-1599 fax

418 South Motor Ave.
 Azusa, CA 91702

Prices Subject to Change Without Notice

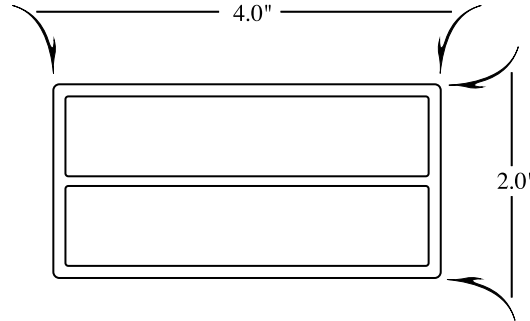


DOUBLE HOLLOW STRETCH & GLUE

PRICE LIST

March 2024

DH-400



Max Size: 172"

Width: 4"

Height: 2"

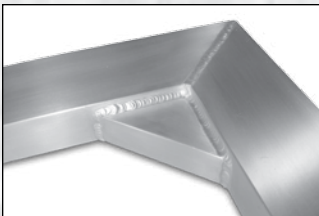
Wall Thickness: .125

Weight per Ft: 2.2 Lbs

Total Frame O.D. Inches

| | | | | | | | | | |
|------------|------------|------------|------------|------------|------------|------------|------------------------------|------------|------------|
| 288 | 296 | 304 | 312 | 320 | 328 | 336 | 344 | 352 | 360 |
| \$ 578.55 | 590.00 | 601.85 | 613.50 | 625.20 | 636.85 | 648.50 | 660.00 | 671.80 | 683.50 |
| 368 | 376 | 384 | 392 | 400 | 408 | 416 | 424 | 432 | 440 |
| 695.00 | 706.80 | 718.50 | 730.00 | 741.80 | 753.50 | 765.00 | 776.75 | 788.50 | 800.00 |
| 448 | 456 | 464 | 472 | 480 | 488 | 496 | 504 | 512 | 520 |
| 811.75 | 823.40 | 835.00 | 846.75 | 858.40 | 870.00 | 881.70 | 893.40 | 905.00 | 916.70 |
| 528 | 536 | 544 | 552 | 560 | 568 | 576 | Frames Over 576" O.D. | | |
| 928.35 | 940.00 | 951.70 | 963.35 | 975.00 | 986.65 | 998.00 | \$ 1.73 per O.D. Inch | | |

1 to 5 List Price 6 to 11 Less 5% 12 or more Less 10%



Corner Gussets

Eino / Diamond Chase
 (800) 923-FRAME
 (626) 969-1821 ph
 (626) 969-1599 fax

418 South Motor Ave.
 Azusa, CA 91702

Prices Subject to Change Without Notice

Stretch & Glue

Price List

January 2023



PRE-BOW

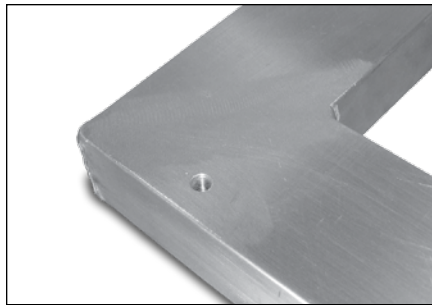
Two Sides \$ 50.00 per set

Recommend Pre-Bow

| | |
|---------------------------|--------------------------|
| 1 1/2" to 2 1/2" Profiles | .375" to .500" per side |
| 2 1/2" to 3" Profiles | .500" to .750" per side |
| 3" to 5" Profiles | .750" to 1.500" per side |

THREADED INSERTS

Flush Mount, Watertight, Stainless Insert \$ 25.00 each
1/4-20, 5/16-18 or 8mmx1.25 \$ 30.00 set-up



LOCATOR BUSHINGS

Aluminum Plug Drilled \$ 25.00 each
Flush Mount, Watertight \$ 30.00 set-up

Bronze Bushing \$ 28.00 each
Flush Mount, Watertight \$ 30.00 set-up

Stainless Steel Bushing (Labor Only) \$ 28.00 each
Flush Mount, Watertight, Stainless Steel Bushing Call for Quote
\$ 30.00 set-up



Eino / Diamond Chase
(800) 923-FRAME
(626) 969-1821 ph
(626) 969-1599 fax

418 South Motor Ave.
Azusa, CA 91702

Prices Subject to Change Without Notice



**DIAMOND
CHASE**

418 South Motor Avenue
Azusa, CA 91702
(800) 923-FRAME
(626) 969-1821 ph
(626) 969-1599 fax